

NEMPAC 2016 Council Challenge

“Give-a-Shift” to the Future of Emergency Medicine

What Has NEMPAC Done For You Lately?

NEMPAC is a critical tool in advocating for ACEP’s legislative agenda including:

- EMTALA medical liability reform
- Codifying EMS standing orders
- Mental health reform
- Offering real solutions to the opioid crisis
- Fighting for fair reimbursement in Medicare and Medicaid
- Increasing funding for GME and EM Research

NEMPAC is emergency physicians’ voice in the political process

- Hosted nine fundraising dine-arounds during LAC16 attended by 100+ ACEP members
- Participated in more than 500 fundraising events for candidates and party committees for 2016 elections
- Lending key support to three emergency physicians in their election bids: Rep. Joe Heck for U.S. Senate in NV, Rep. Ruiz in CA-36, and Dr. Mark Plaster in MD-03
- Supported the attendance of ACEP members at more than 100 fundraisers in their home districts
- Co-hosted medical specialty events at the RNC in Cleveland and the DNC in Philadelphia to raise EM's visibility



Why Should ACEP Councillors “Give-a-Shift”

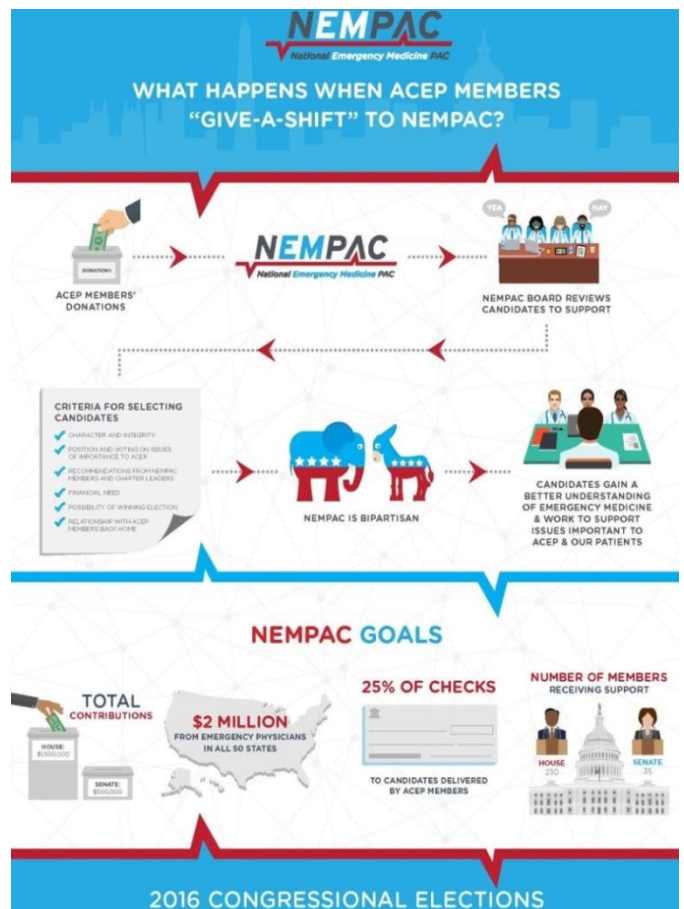
All ACEP Board members and NEMPAC Board members are Give-a-Shift donors. The support of ACEP Councillors sends a strong message to all ACEP members about the need to remain in the top tier of all medical PACs and increase our “political clout” in the 2016 elections.

NEMPAC “Give-a-Shift” Options

- \$2,500 PLATINUM** (one-time donation, \$210/monthly or \$625/quarterly)
- \$1,200 GIVE-A-SHIFT** (one-time donation, \$100/monthly or \$300/quarterly)
- \$365 GIVE-A-SHIFT** (one-time donation, \$30/monthly or \$90/quarterly)
(Available only to retired physicians and physicians up to three years out of Residency)
- \$120 RESIDENT GIVE-A-SHIFT** (one-time donation, \$10/monthly or \$30/quarterly)

Only ACEP members can support NEMPAC. Not one penny of your ACEP dues can be spent for direct political contributions.

Contributions or gifts to NEMPAC are voluntary and not tax deductible for federal income tax purposes. The amount given or refusal to donate will not benefit or disadvantage you.



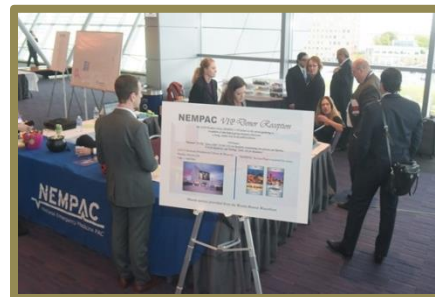
NEMPAC ACTIVITIES AT ACEP16

Council Challenge

Mandalay Bay

Friday, October 14 - Saturday, October 15

All State Delegations and Sections who reach 100% NEMPAC participation by 4 PM on Saturday during the Council Challenge will be entered into a drawing. Councillors from the winning state or section will be invited to attend all NEMPAC VIP events listed below, regardless of the amount of their donation.



NEMPAC VIP Reception

(Open to "Give-a-Shift" and "Sterling" Donors Only)

Skyfall Lounge, Delano Hotel

Saturday, October 15

6:00 am – 8:00 pm

"Give-a-Shift" donors (\$1,200 annually, Residents \$120) and one guest

"Sterling" donors (\$600 to \$1199, Residents \$60), donor only



NEMPAC VIP Donor Lounge

(Open to "Give-a-Shift" and "Sterling" Donors Only)

Mandalay Bay Convention Center, Surf B

Sunday, October 16 - Tuesday, October 18

8:00 am – 4:00 pm

Complimentary breakfast, lunch, & snacks provided.

A professional shoulder or neck massage and complimentary use of laptop computers, printers, and television will be offered.



NEMPAC Access Pass or NEMPAC Guest Pass required for all NEMPAC VIP events.

Candidate Fundraisers at ACEP16

NEMPAC is co-hosting fundraising receptions for three emergency physicians running for Congress.

Rep. Joe Heck (R-NV) for U.S. Senate

NEMPAC VIP Donor Lounge, Surf B
Sunday, October 16
9:30 am – 10:30 am

Rep. Raul Ruiz (D-CA)

NEMPAC VIP Donor Lounge, Surf B
Tuesday, October 18
12:00 pm – 1:00 pm

Dr. Mark Plaster (R-MD)

Location TBA
Monday, October 17
5:00 pm – 6:00 pm



A separate donation to each of the campaigns is required for attendance.